

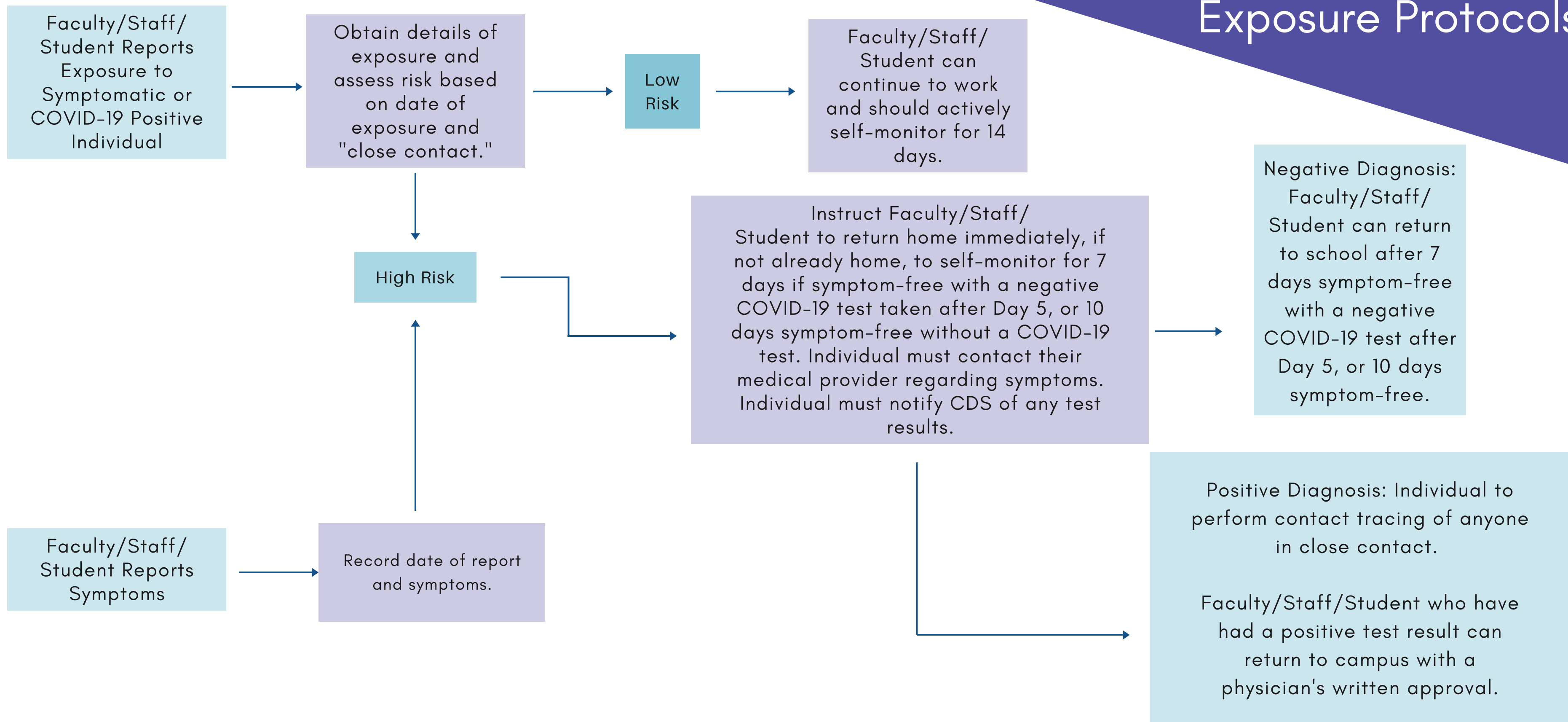


2020 - 2021

CAMPUS REOPENING PLAN

Welcome Home,
Panthers!

COVID-19 Individual Exposure Protocols



COVID-19 POSITIVE QUARANTINE



A student or staff-member quarantine due to a COVID-positive test requires that a parent/guardian or the affected staff member immediately call the school to report the positive test. This individual must stay home and away from public spaces (including the school) for 14 days.

Any student quarantined in either capacity will be enrolled in our Adaptive Learning program once a parent/guardian informs the school of the need to engage in online learning.

A student or staff-member precautionary quarantine is protocol for any student or staff member who is exhibiting symptoms consistent with COVID-19 or has been exposed to a person who has tested positive for COVID-19. This individual should contact their medical provider regarding any symptoms. Any person on precautionary quarantine should stay away from public spaces (including the school) for a minimum of 7 days. This individual must be symptom-free and produce a negative COVID-19 test taken after Day 5 of the date of last exposure in order to be allowed to return. An individual on Precautionary Quarantine may return to school after 10 days symptom-free, with or without a negative test result.

PRECAUTIONARY QUARANTINE



Protocols Regarding Notification of COVID-19 Positive

All individuals - whether students, families, or staff - are required to report if they've come into contact with a person testing positive for COVID-19 to Community Day School administrative staff. They will be sent home. This will be reported to the Department of Health by a member of the School Administration Team. Individuals having close contact with a positive COVID-19 diagnosis will be instructed to self-quarantine for 14 days and may return after this period with a note from a physician if no symptoms have occurred, or as otherwise instructed by the Department of Health.

Individuals with a confirmed case of COVID-19 should not enter the campus under any circumstances. Should a person have a confirmed case of COVID-19, they must leave the campus immediately and seek appropriate medical attention. The case will be reported to the Department of Health by a member of the School Administration Team. The individual may not return for at least 10 days after onset of symptoms and be symptom free for 72 hours, or as recommended by the Department of Health. The individual will be required to provide a physician's note of approval to return to campus.

If COVID-19 is confirmed in a student or staff member:

Community Day School will call the Sarasota County Health Department COVID-19 Reporting Call Center to report a positive case on campus. The Health Department will provide information at that time to determine a complete set of protocols that will include testing, notification of parents, cleaning/disinfection and closure days. The School will close for a minimum of 24 hours before complete disinfection procedures may begin. The school may be closed for as little as 48 hours or as long as 2+ weeks, depending upon the protocols provided by the Health Department. The program director will inform all parents and staff of the facility closure and related information regarding reopening

In consultation with the CDS Reopening Taskforce, which includes guidance from medical professionals, we are able to execute the physical campus modifications needed to support students safely returning to campus in August 2020.

Yes

CDS Preschool is open with social distancing protocols in place.

Yes

Has a student or staff member tested positive for COVID-19?

Yes

Department of Children and Families determines it is safe to reopen?

Yes

Preschool is open with increased distancing guidelines. Preschool will not close for in-person instruction without a mandate by the State or Health Department.

No

No

Preschool remains closed* until mandate is lifted, at which point:

*Should the Preschool be under a mandated closure for any reason, we will adjust or extend the school year for an additional period of up to two weeks to ensure maximum classroom time. If the Preschool must be closed for in-person instruction beyond two weeks, we will fully credit preschool families for any additional classroom time that is missed.

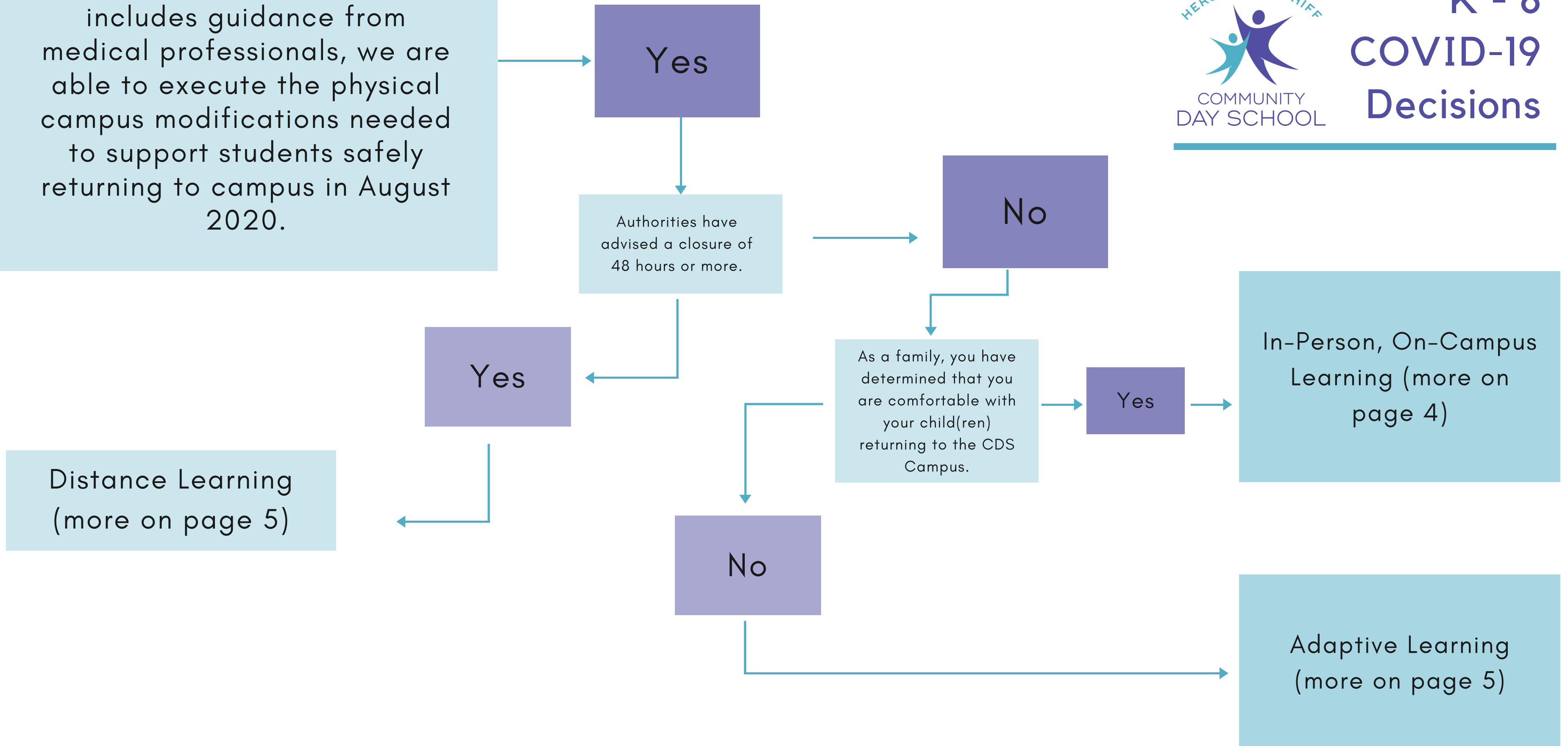


Preschool COVID-19 Decisions

In consultation with the CDS Reopening Taskforce, which includes guidance from medical professionals, we are able to execute the physical campus modifications needed to support students safely returning to campus in August 2020.



K - 8 COVID-19 Decisions



IN-PERSON, ON-CAMPUS LEARNING

This learning model is a socially distanced version of the Community Day School experience you know and love. Students will experience more physical separation within a classroom – and our older students will be required to wear masks – but will still have full access to our exceptional learning environment.

Students will spend more time in smaller cohorts to promote distancing.

Students will experience significantly more time learning in an outdoor environment, whether in the garden, outdoor classroom, or other safe outdoor areas on campus.

Our Adaptive Learning option is designed to provide support for students and families who must be out temporarily due to COVID19 related concerns. It will align as much as possible in core subjects (Language Arts, Math, Science) with on-campus learning. "AL @ CDS" is designed to help maintain a student's progress in the classroom. Any student enrolled in Adaptive Learning is not subject to the CDS absence policy.

ADAPTIVE LEARNING

DISTANCE LEARNING

Distance Learning provides an educational alternative to in-person instruction during a mandatory closure. During Distance Learning, a portion (or all) of the school will be involved. During mandatory Distance Learning, teachers providing online instruction in all core subjects.

SANITIZING MEASURES @ CDS



HVAC system filters
optimized



Hand sanitizer
stations increased
throughout campus



Doubled janitorial
staff to allow for
daytime and evening
sanitization



Shared spaces and
standard equipment
disinfected regularly



Items that cannot
withstand liquid
sanitization will be
quarantined

ON-CAMPUS LIFE @ CDS

No matter the situation, we pride ourselves on being a #CDSFamily. Despite the uncertainty that COVID-19 brings, our commitment to being a safe environment for growth and learning continues to hold strong. The aspects of Life @ CDS that makes a Community Day School experience so unique will not change.



Low Student:Teacher
Ratios



Play-Based Learning
for Preschool



Project-Based
Learning for K-8



Social-Emotional
Learning for All



Age-Appropriate
Technology



Daily Fine Arts
Opportunities



Outdoor Learning
Each Day



Multiple Foreign
Language Options



Exposure to Jewish
Values



Competitive Athletic
Opportunities

CDS Commitment



Daily COVID Screenings for all student, faculty, staff, and visitors.



A health and wellness professional on campus each day.



Mandating that any person who is not a student or staff member will only be permitted on campus with an appointment to conduct official business.



Mandating the use of masks/face covering for faculty, staff, and students - when developmentally appropriate.



Enhanced sanitization and cleaning processes.



Varying athletic offerings based on Florida Gulf Coast League recommendations.



Possible uniform modifications for comfort and safety.



Using outdoor spaces to the utmost for social and instructional purposes.



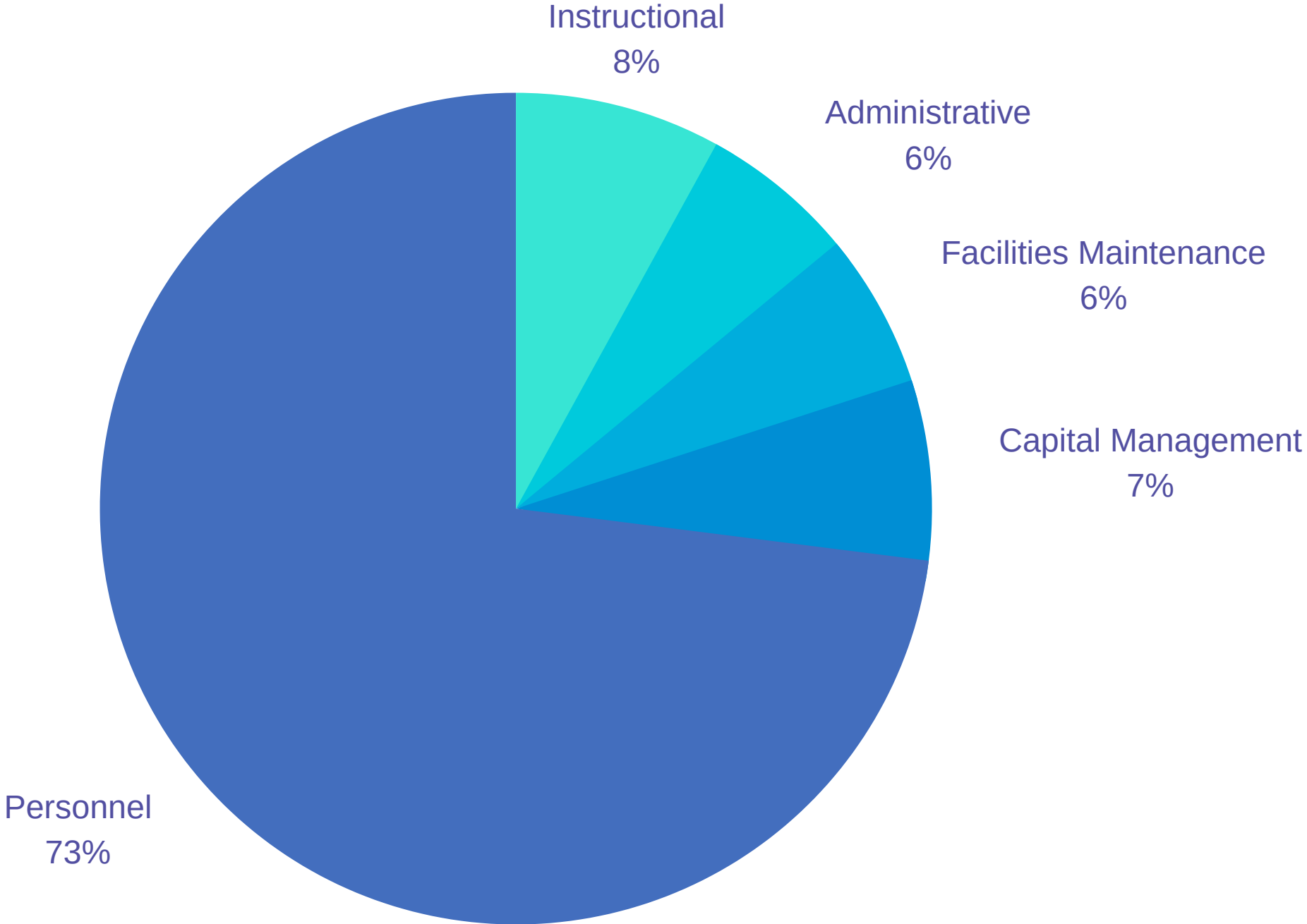
Consistent communication with physician liaisons to update policies and guidelines as-needed.

FINANCES @ CDS

WHERE DOES YOUR TUITION GO?

Tuition covers the costs of a Community Day School education, whether that happens on- or off-campus.

- Capital Management
- Facilities Maintenance
- Administrative
- Instructional
- Personnel



Capital Management	Facilities Maintenance	Administrative	Instructional	Personnel
Mortgage Principal	Security Electricity	Insurance	Classroom supplies	Salaries
Mortgage Interest	Telephone	Legal Services	Classroom Activities	Benefits-Health Insurance
Technology Fund	Water/Gas	Blackbaud	Extracurricular	Benefits- Retirement
Capital Improvement	Waste Services	Marketing	Testing- Admission	Taxes- Payroll
Fund Contingencies	Van	Admissions	Testing- Achievement	Staff Development
	Maintenance/Repairs	Development	Textbooks	Employee Screening
	Custodial Supplies/Srvcs	Office Expenses	Educational Software	Substitute
	Building Maintenance	Postage/ Printing		
	Grounds Maintenance			

CDS Leadership Team and Reopening Taskforce

Dr. Kate Oksov

Dr. Ken Meredith

Dr. Stephanie Lirio

Dr. Leonie Van Passel

Dr. Melissa Connelly

Dr. Jazmin Lesnick

Dr. Joseph Lesnick

Dr. Renata Berg

Dan Ceaser – Head of School

Amy Meese – Admissions Director

Robin Sweeting – Director of K – 8

Vickie Inglese – Director of Preschool

Carrie Kashawlic – Business Office Manager

Betsy Laureano – Director of Human Resources

Lindsay Sweeting – Marketing Coordinator

Brenna Wilhm – Senior Development Associate



HEALTH AND SAFETY @ CDS

Community Day School is reopening for in-person instruction with new guidelines in place that have been carefully considered to address and promote the health, safety, and overall welfare of our community. these procedures have been thoughtfully developed with local, state, and national guidance to ensure the best standard of care. Community Day School recognizes that plans are subject to change based on advisement from governing agencies.